

Setting Up Outlook 2010 SP2

Important! Only Outlook 2010 SP2 with Updates KB2956191 and KB2965295 and newer are supported

1. Enter your data.

Neues Konto hinzufügen

Konto automatisch einrichten
Klicken Sie auf 'Weiter', um eine Verbindung mit dem E-Mail-Server herzustellen und Ihre Kontoeinstellungen automatisch zu konfigurieren.

E-Mail-Konto

Ihr Name:
Beispiel: Heike Molnar

E-Mail-Adresse:
Beispiel: heike@contoso.com

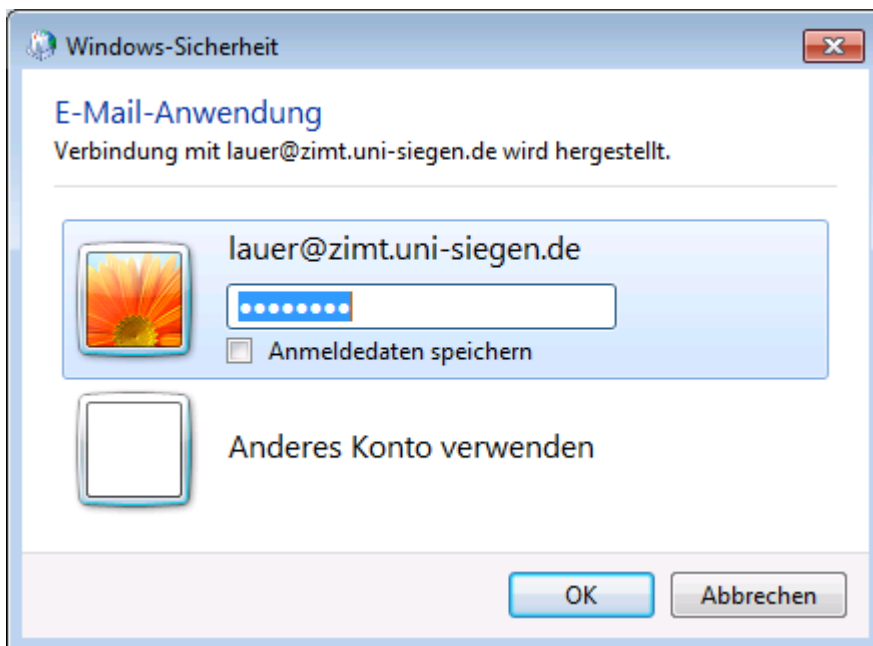
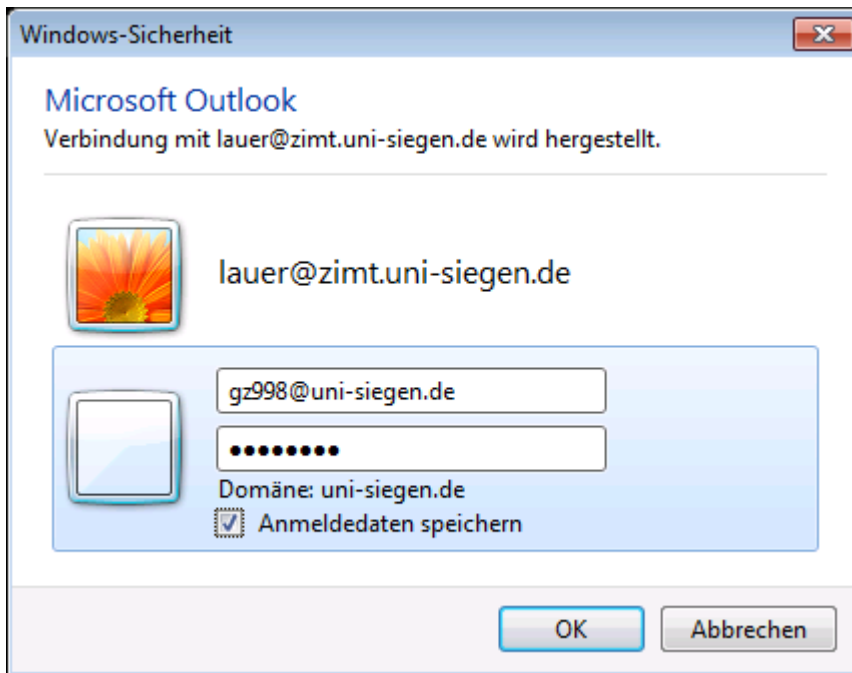
Kennwort:
Kennwort erneut eingeben:
Geben Sie das Kennwort ein, das Sie vom Internetdienstanbieter erhalten haben.

Textnachrichten (SMS)

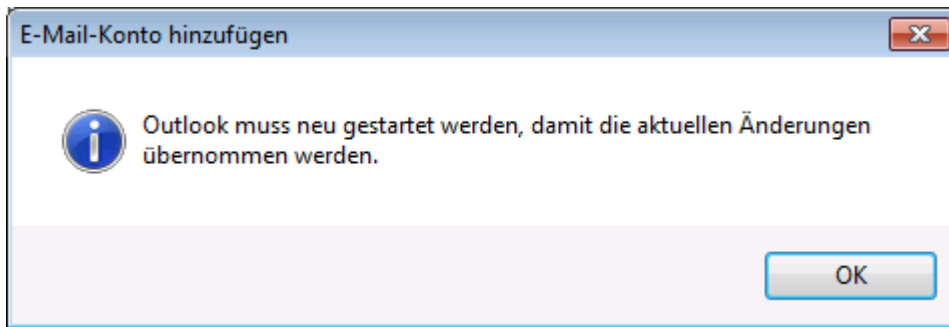
Servereinstellungen oder zusätzliche Servertypen manuell konfigurieren

< Zurück Weiter > Abbrechen

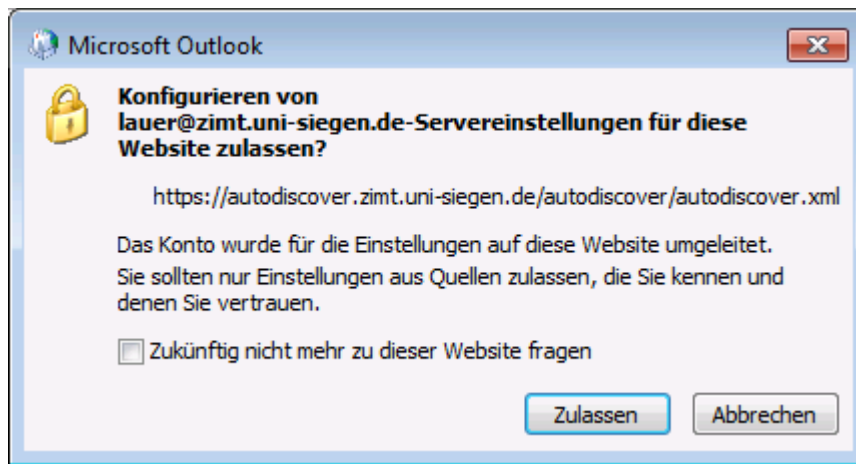
2. If you are prompted to enter the password, make sure that you enter the correct user name. If not, click on "Use another account" and enter your username in the correct form.
 - **g<letter><3-digit number>@uni-siegen.de** for long-time employees
 - **<initials><6-digit number>@uni-siegen.de** for new employees
 - **g<6-digit number>@uni-siegen.de** for students



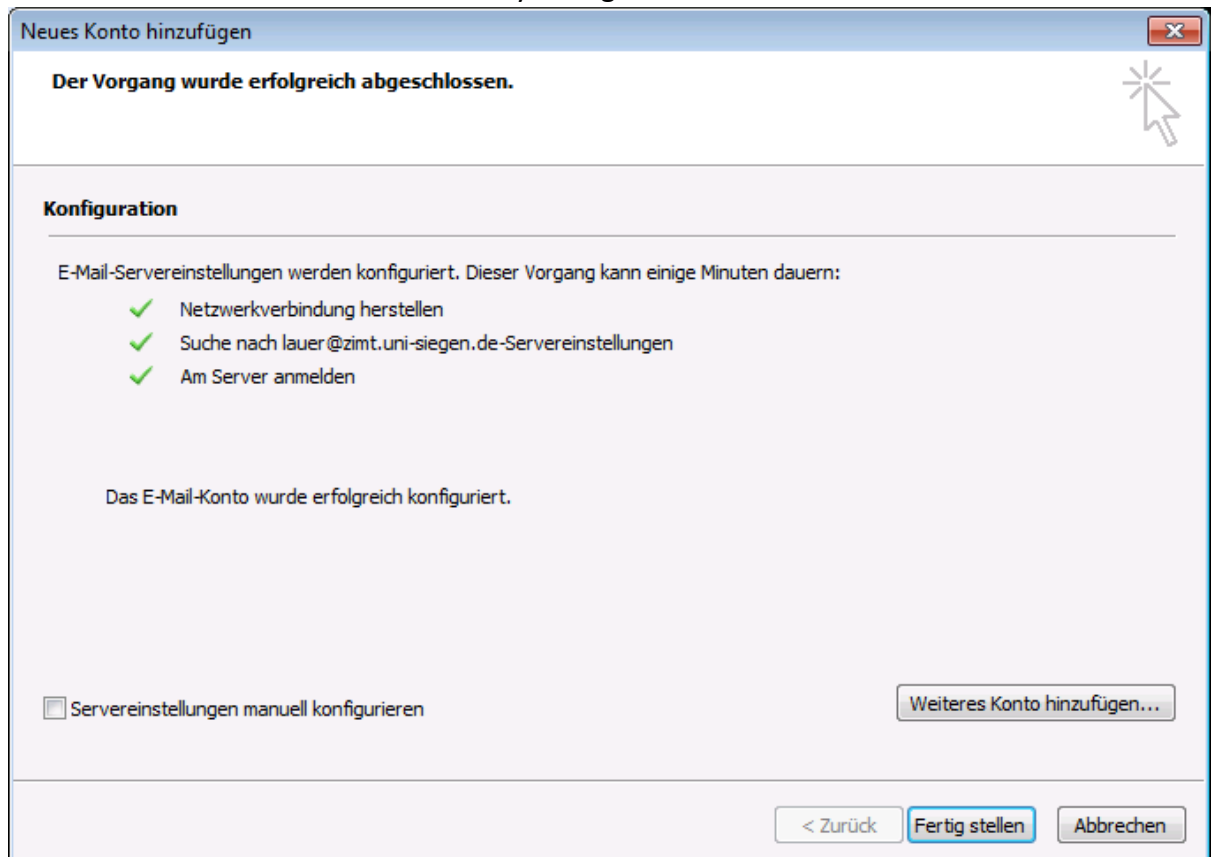
3. depending on how your computer or account is configured, the following message will appear.



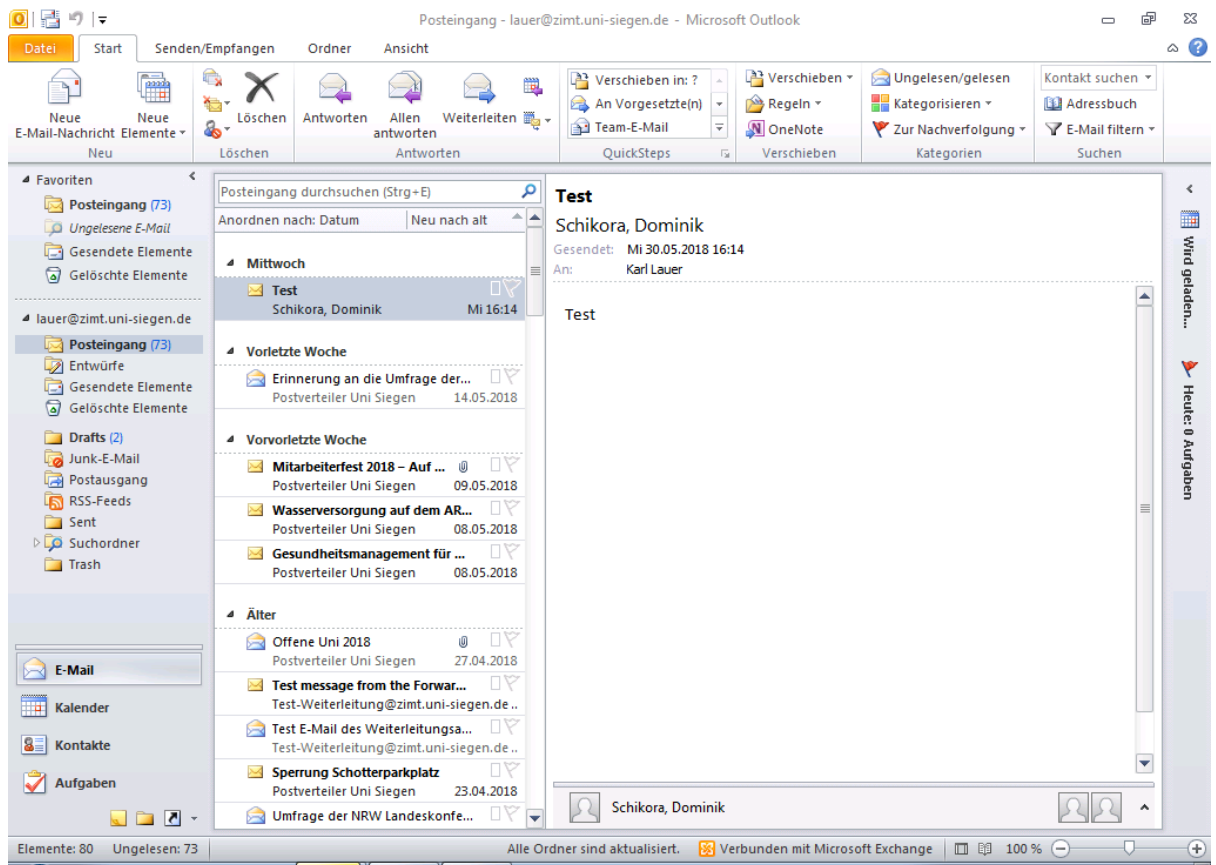
- You may be asked to accept the configuration settings of "https://autodiscover.XXXX.uni-siegen.de". Then please tick the box "Do not ask about this website in the future" and confirm with Allow.



- The account should then be successfully configured.



6. and the mailbox can be used.



To use all new features of the e-mail system, please consider an update to the current MS Office or MS Outlook version.